

SATA

Air Vision 2000

SATA

German Engineering

The Features



The Carbon Filter



German Engineering

SATA



10cm

Alternative Brand



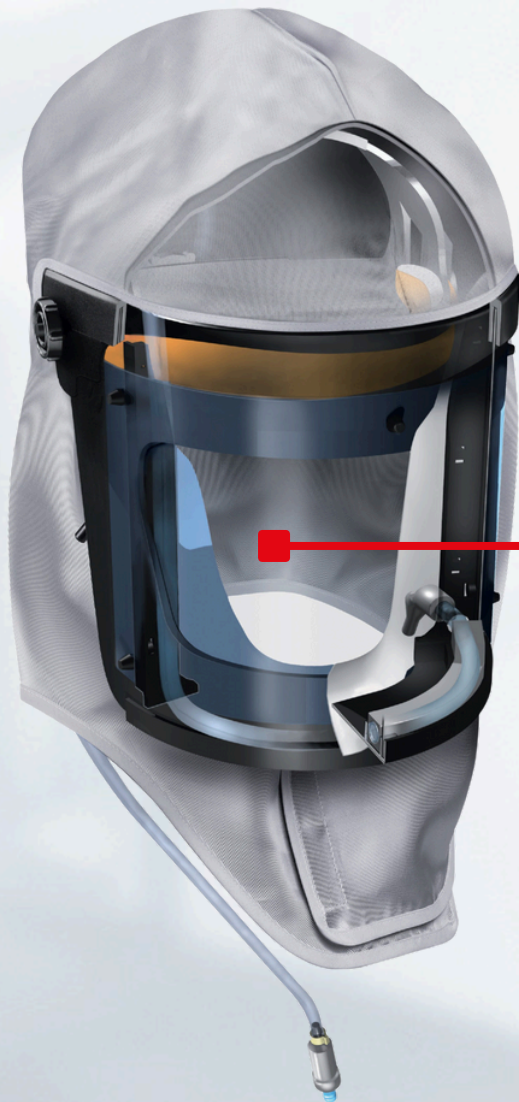
3cm

- **The Largest Belt Hung Carbon/Charcoal Filter Available**
- **Eliminates Oil Vapours and Odours**
- **3 Month Life Cycle**
- **Tool Free Filter Changes**

The Single Visor System

SATA

German Engineering



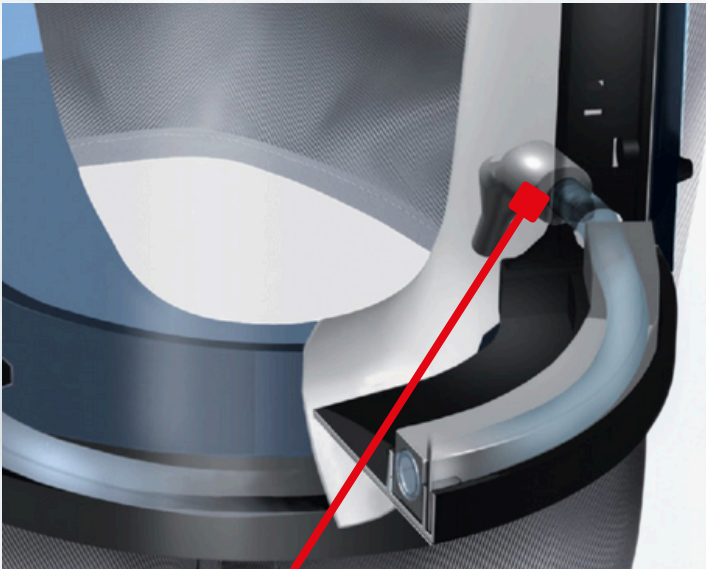
Single Visor System

- Only one replaceable visor, no permeant visor underneath.
- Brand New Vision after every change - No scratched hard visor underneath.
- Visors available in various pack sizes (5/25/1000)

Visual & Audible Warning Devices



German Engineering



Audible Warning Device
(Hood)



Visual Warning Device
(Belt Unit)

- **Audible low air pressure warning device fitted inside hood (Not On Belt Unit) for easy audibility.**
- **Visual low air pressure warning device on belt unit.**

Storage Box & Anti Static 1.2m Hose

SATA

German Engineering



Hygienic Storage Box

1.2m Anti Static Air Hose

- **The SATA Vision 2000 arrives complete in a hygienic storage box for easy storage when not in use**
- **The SATA Vision 2000 arrives complete with a 1.2m Anti Static Spray Gun Hose**

Operating with Positive Pressure Principle

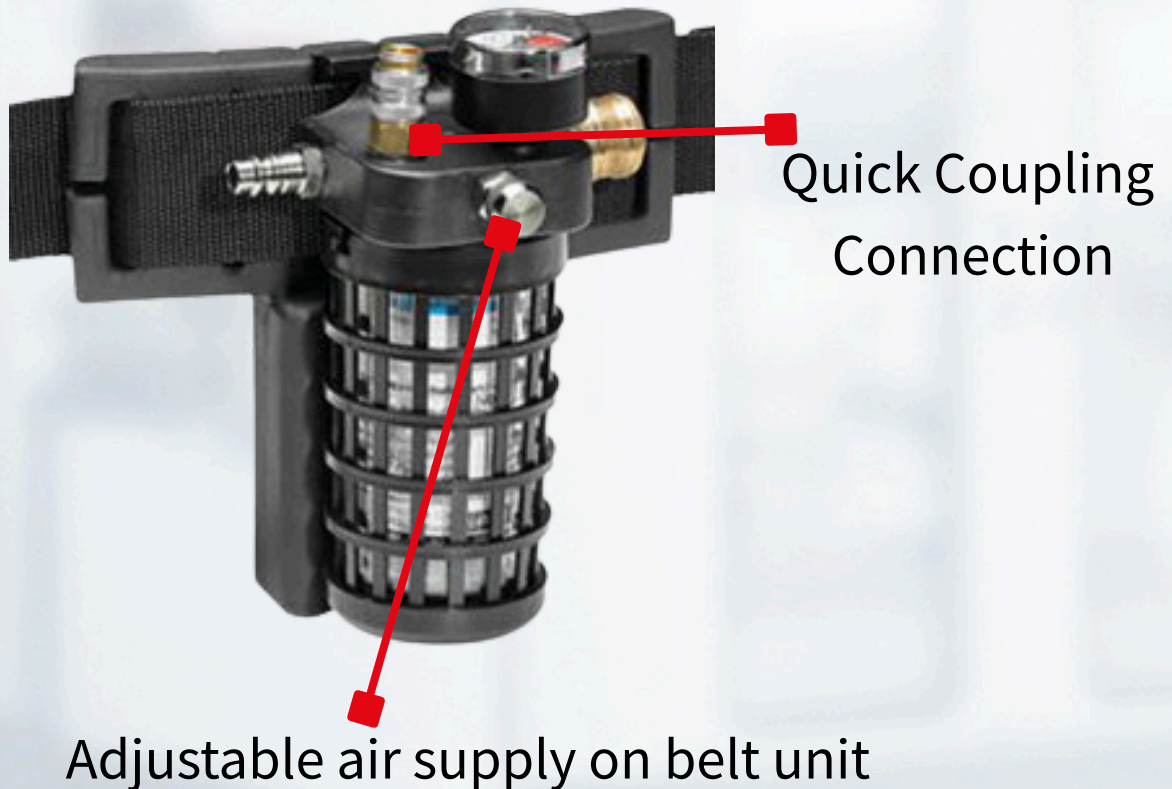
SATA

German Engineering



- In a positive pressure air-fed mask, the air entering the mask is supplied at a rate higher than what the wearer inhales. This creates a slightly higher internal pressure compared to the ambient air. As a result, if there is any small gap or imperfect seal, clean air will leak outward from the mask rather than contaminated air leaking inward, ensuring continued protection for the wearer even if the seal isn't perfect.

Adjustable Air Supply & Quick Coupling Connection:

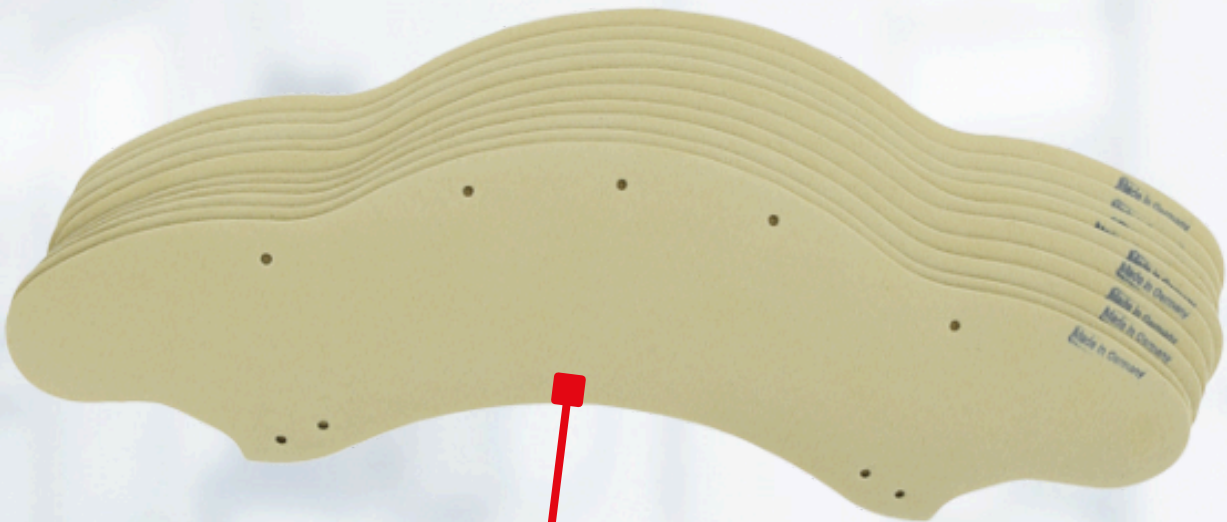


- The SATA Vision 2000 Belt unit has an integrated air supply adjustment to allow the user to set thire desired inlet pressure.
- The SATA Vision 2000 arrives complete with quick coupling connections.

Dermatologically Tested Sweatband



German Engineering



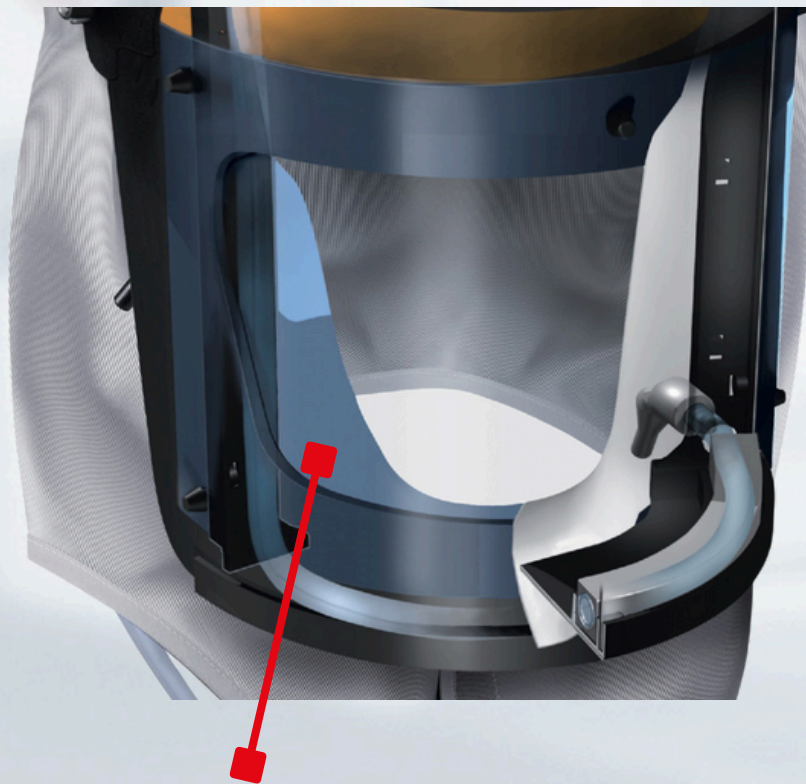
Microfibre Velour Sweatband

- **Dermatologically tested replaceable sweatband**
- **Manufactured using special microfibre velour material for improved user comfort**
- **Simple replacement**

Quick Replacement Hygiene Inserts



German Engineering



Quick Replacement Hygiene Inserts

- **Easy to replace hygiene insert for increased user comfort & hygiene.**

Lifted Visor Remains Upwards

SATA

German Engineering

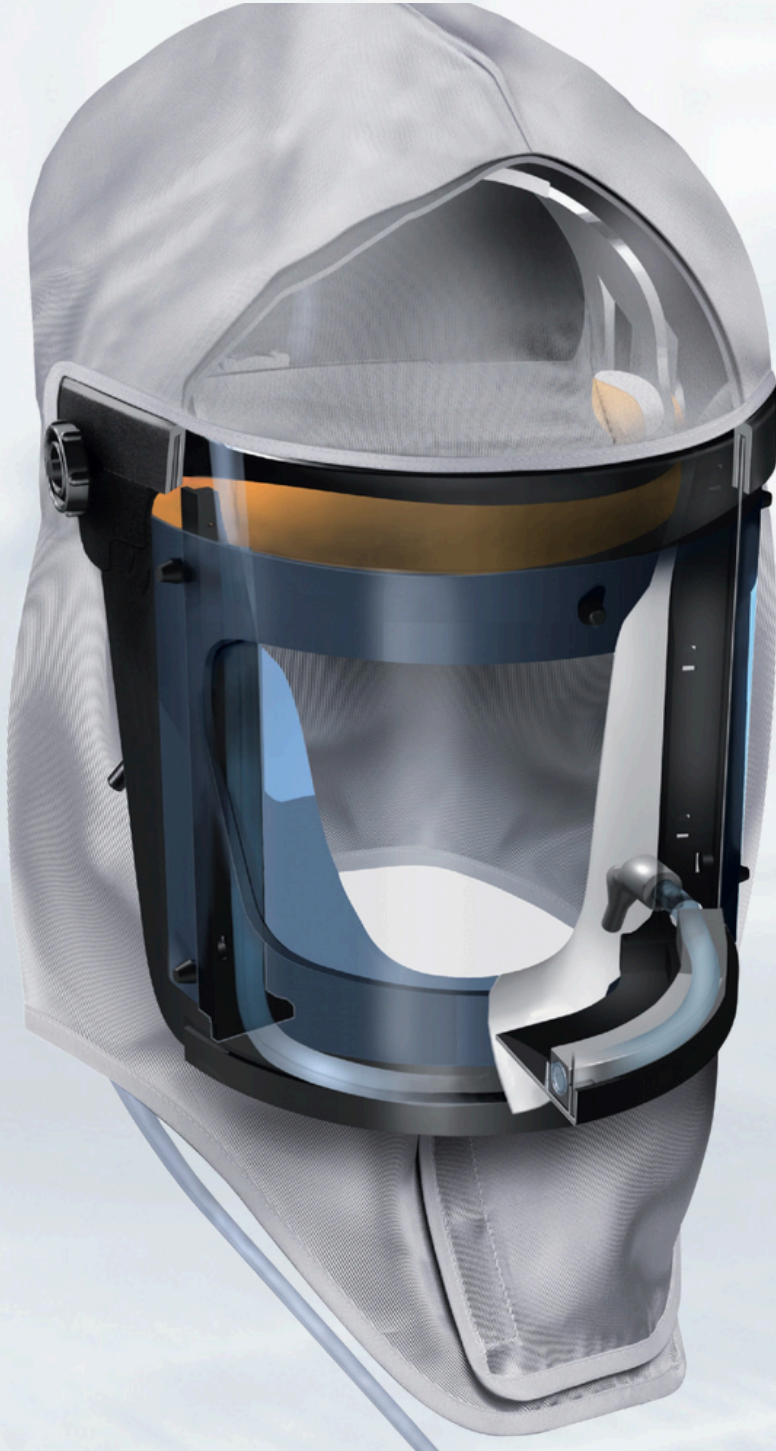


- **When the user lifts the visor when not in a hazardous environment, the hood will lock in the upright position for added user convenience.**

Large Hood Cloth

SATA

German Engineering



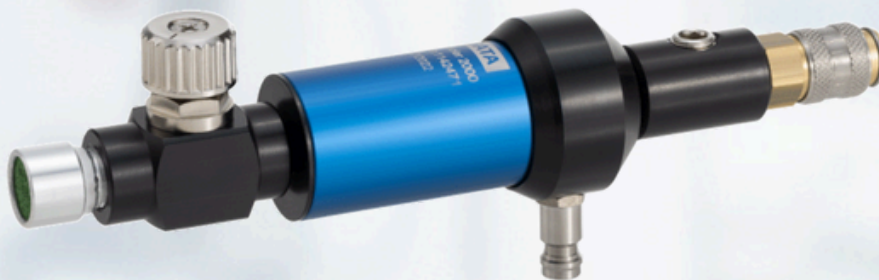
- **Large Hood Cloth which fully protects the head and neck**

Accessories

Warmer and Cooler

SATA

German Engineering



- **Additional accessories are available for the vision 2000, users can add the SATA air cooler or the SATA Air warmer to their belt unit to increase user comfort.**

Further Information:



German Engineering

- **Conforms to EN14594 Regulations**
- **Protects up to 100 Times the TRK Value**
- **Full UK Availability of Spare parts and Complete Units**
- **UK wide team available for technical support**